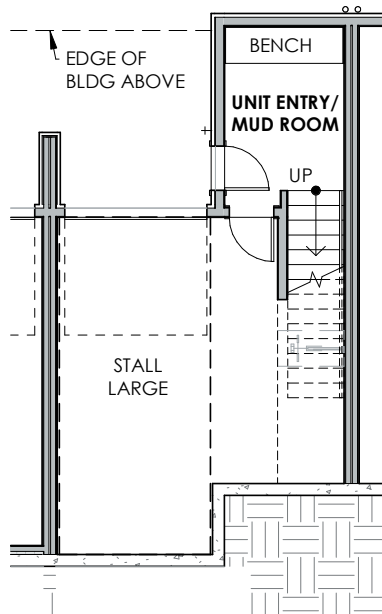


GILMAN PARK TOWNHOMES

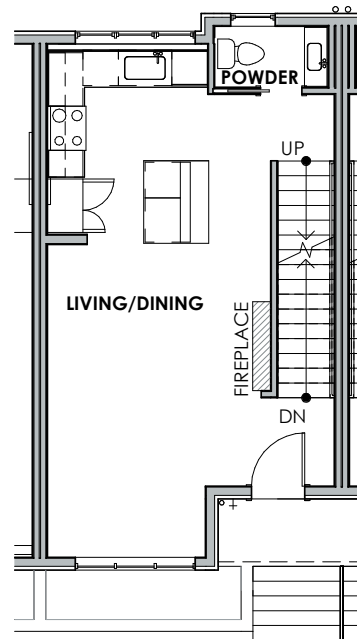
TH3

5316 9th Ave NW

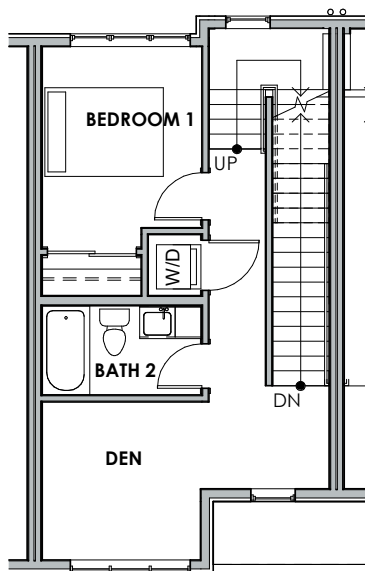
- 2 Bedrooms + Den
- 2.25 Baths
- 1,692 Sq Ft
- Roof Deck
- Attached Garage



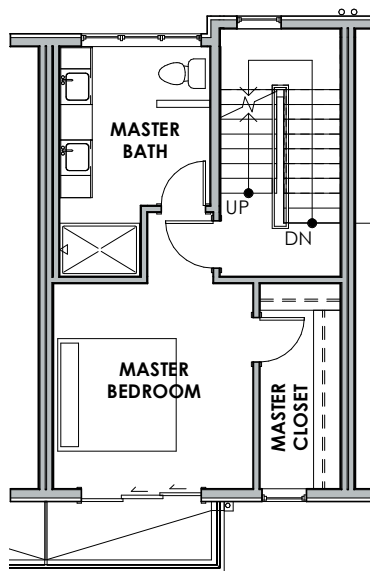
TH3 - LEVEL P1



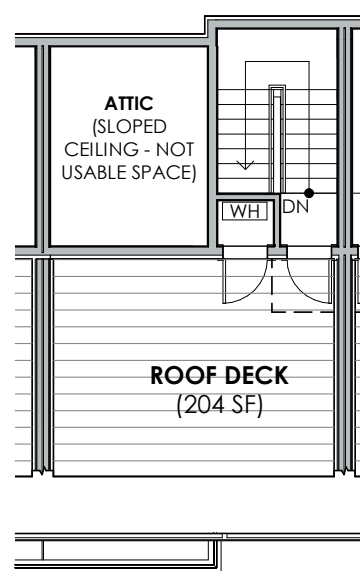
TH3 - LEVEL 1



TH3 - LEVEL 2



TH3 - LEVEL 3



TH3 - ROOF DECK

Seller reserves the right to modify or change plans, specifications, features, and prices without warning. Floor-plans, site plans, maps, and renderings may not be to scale. Interior surveyed square footage may vary from architectural square footage calculations.



OLSEN ANDERSON

Windermere
REAL ESTATE

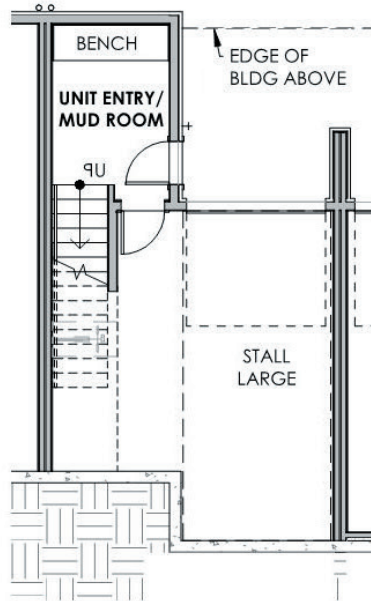
Jed Kliman | 206-778-7665
jkliman@windermere.com

GILMAN PARK TOWNHOMES

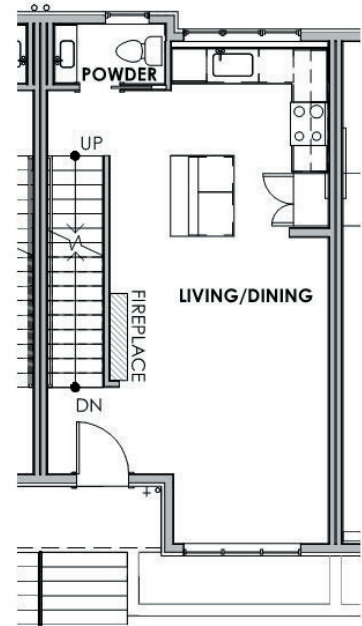
TH4

5314 9th Ave NW

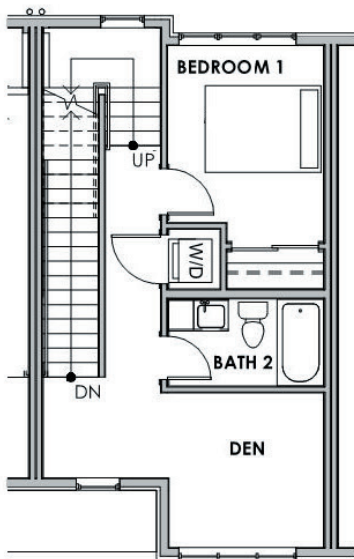
- 2 Bedrooms + Den
- 2.25 Baths
- Rec Room
- 1,692 Sq Ft
- Roof Deck
- Attached Garage



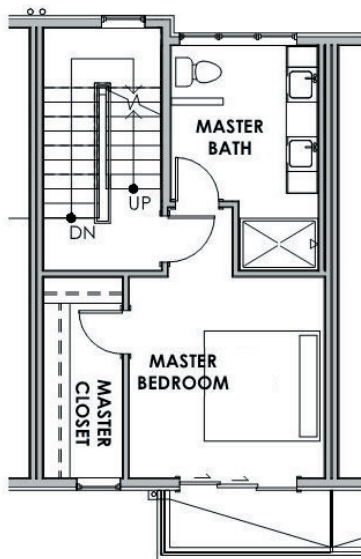
TH4 - LEVEL P1



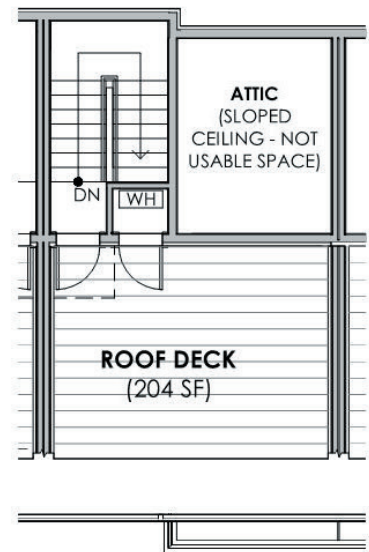
TH4 - LEVEL 1



TH4 - LEVEL 2



TH4 - LEVEL 3



TH4 - ROOF DECK

Seller reserves the right to modify or change plans, specifications, features, and prices without warning. Floor-plans, site plans, maps, and renderings may not be to scale. Interior surveyed square footage may vary from architectural square footage calculations.



OLSEN ANDERSON

Windermere
REAL ESTATE

Jed Kliman | 206-778-7665
jkliman@windermere.com